

WELCOME TO

IN THE FOOTSTEPS OF EDVARD MUNCH

Edvard Munch lived at Skrubben in Kragerø from 1909 to 1915. During his stay in Kragerø, Munch experienced one of his most intensely creative periods. It was here that he was inspired by the people and scenery surrounding him. This led to the creation of two of his main works, namely *The Sun* and *The History*.

You will find reproductions of these two paintings and ten other motifs from Kragerø by Edvard Munch on the signposted trail "In the footsteps of Edvard Munch". The images, with an explanatory text about when and how they were created, shows you the various locations where Munch painted his famous paintings. Some locations have remained unchanged since the time of Edvard Munch, but others are completely unrecognizable. Some of Munch's artworks from this period also serves as an important documentation of the local cultural history, i.e. the paintings *Yellow Log* and *Workers in Snow*.

The trail winds through streets and areas normally not visited by tourists and this will give you a different perspective of the town. It takes you to his home at Skrubben and its immediate surroundings where most of his paintings were created. Munch also enjoyed walking in the hills behind the town for a bit of fresh air and an overview, and we invite you to share the same experience.

We hope you will enjoy an informative and adventurous walk in the footsteps of Edvard Munch! The whole trail is an approximately one and a half hour walk, including the stops at the information boards.

STREET IN KRAGERØ 1913

EXPERIENCE KRAGERØ

IN THE FOOTSTEPS OF EDVARD MUNCH



EDVARD
MUNCH



**Kragerø
kommune**

All reproductions on information boards and map for
IN THE FOOTSTEPS OF EDVARD MUNCH © The Munch
Museum/ The Munch-Ellingsen group / BONO 2009



1
CHRISTIAN
GIERLØFF
1909



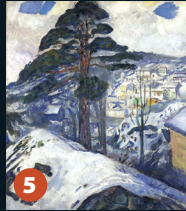
2
UPHILL WITH A SLEDGE
1910-12



4
STREET IN KRAGERØ 1913



3
GALLOPING HORSE
1910-12



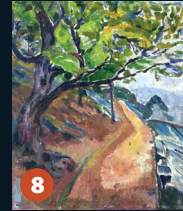
5
WINTER IN
KRAGERØ
1912



6
THE SUN 1911



7
HOUSES IN KRAGERØ 1916



8
GREEN TREE BY
THE ROAD
1913?



9
WORKERS IN
SNOW 1910



10
THE YELLOW LOG
1912



12
SHIP BEING
SCRAPPED 1909



11
THE HISTORY 1911 / 1914-16

